



6390 Philips Highway  
Jacksonville, FL 32216  
Phone (904) 737-7144

## SPECIFICATION DATA SHEET

# MODEL No. 3720

SPIN IN

Date: 10/16/09 rev.

Drawn by: M.D.C.

### DIMENSIONAL DATA

SIZES AVAILABLE: 4" THROUGH 20"

COLLAR LENGTH: 6"

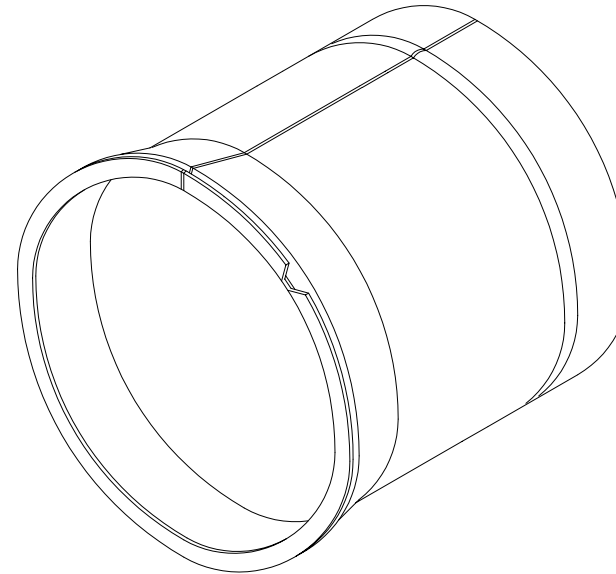
### FABRICATION DATA

**MATERIAL:**  
HOT DIPPED GALVANIZED STEEL SHEET  
PER ASTM-A653 CS TYPE B.

**GAUGES:**  
4" THROUGH 8" = 28 GAUGE  
9" THROUGH 14" = 26 GAUGE  
16" THROUGH 20" = 24 GAUGE

### FEATURES

FABRICATED WITH CONTINUOUS WELD  
LONGITUDINAL SEAM FOR NO AIR LEAKAGE  
AT 2" W.G. STATIC PRESSURE.



### OPTIONS

NO. 3720-D: SPIN IN WITH DAMPER.  
NO. 3720-DS: SPIN IN WITH DAMPER AND  
DAMPER HANDLE STANDOFF.  
NO. 3720-DS W/ SCOOP: SPIN IN WITH DAMPER,  
STANDOFF AND SCOOP.

### SPECIAL NOTES

MADE TO MEET S.M.A.C.N.A. GAUGE STANDARDS. MAXIMUM 2" W.G. STATIC PRESSURE SCHEDULE.  
(S.M.A.C.N.A. HVAC DUCT CONSTRUCTION STANDARDS, SECOND EDITION - 1995)