



6390 Philips Highway  
Jacksonville, FL 32216  
Phone (904) 737-7144

## SPECIFICATION DATA SHEET

**MODEL No. 3710**  
STRAIGHT TAKEOFF WITH GASKET RING

Date: 10/09/09 rev.

Drawn by: M.D.C.

### DIMENSIONAL DATA

SIZES: 4" THROUGH 20" DIAMETER

COLLAR LENGTH 6" - ALL SIZES

### FABRICATION DATA

MATERIAL:  
HOT DIPPED GALVANIZED STEEL SHEET  
PER ASTM-A653 CS TYPE B.

GAUGES:  
4" THROUGH 8" = 28 GAUGE  
9" THROUGH 14" = 26 GAUGE  
16" THROUGH 20" = 24 GAUGE

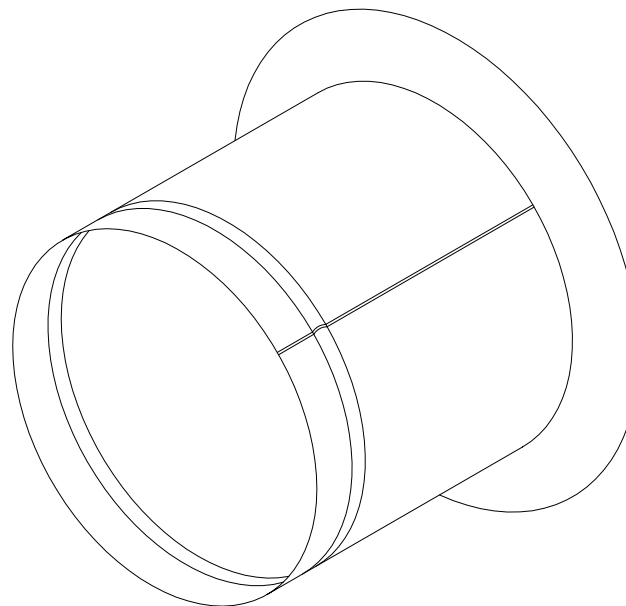
### AIR FLOW CHARACTERISTICS

BASED ON 700 F/M VELOCITY IN MAIN DUCT, 600  
F/M VELOCITY IN BRANCH DUCT. DESIGN  
FRICTION LOSS OF .15" W.G. PER 100 FT. OF DUCT.  
PRESSURE LOSS IN EQUIVALENT FEET OF  
BRANCH DUCT = 25FT.

### FEATURES

FABRICATED WITH CONTINUOUS WELD  
LONGITUDINAL SEAM FOR NO AIR LEAKAGE  
AT 2" W.G. STATIC PRESSURE.

FABRICATED WITH 1" WIDE GASKETED FLANGE  
WITH PRE-DRILLED SCREWS HOLES FOR EASE  
OF INSTALLATION.



### OPTIONS

No. 3710-D: STRAIGHT TAKEOFF WITH MANUAL  
VOLUME DAMPER.  
No. 3710-DS: STRAIGHT TAKEOFF WITH MANUAL  
VOLUME DAMPER AND 2" DAMPER  
HANDLE STANDOFF.

### SPECIAL NOTES

MADE TO MEET S.M.A.C.N.A. GAUGE STANDARDS. MAXIMUM 2" W.G. STATIC PRESSURE.  
(S.M.A.C.N.A. HVAC DUCT CONSTRUCTION STANDARDS, SECOND EDITION-1995)